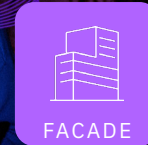
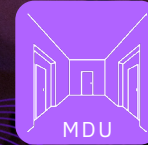


InvisiLight® ILU (Inside Living Unit) Solution

Invisible fiber. Visible results.



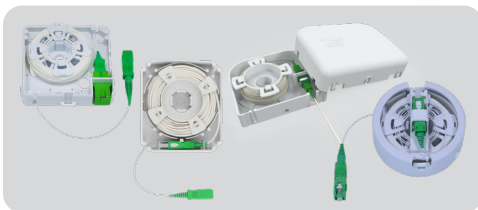
INVISILIGHT® INSIDE LIVING UNIT: A LIGHTERA FTTX SOLUTION

Applying our Award-Winning Optical Fiber Inside Living Units

The **InvisiLight Indoor Living Unit (ILU) Solution** enables fast, easy, virtually invisible fiber deployment in residences or businesses to the ONT.

SIMPLIFY YOUR FIBER DEPLOYMENT

PRODUCTS USED



InvisiLight ILU Module
Placed near ONT in Living Unit

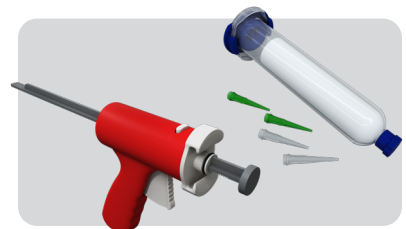
- Includes spool for easy installation payout and slack management
- Mounting hardware included
- Choices available for wall-mount and desk-mount ONTs



NEARLY INVISIBLE
(600 μm ILU Cord pictured)

InvisiLight ILU Cord
Applied along Ceilings
or Baseboards

- Included in module
- 1 and 2 fiber versions available
- 1 fiber - 600 μm or 900 μm
- 2 fiber - 1.2 mm diameter
- Various lengths up to 40 meters available



Installation System
Installation Tool
and Adhesive

- Water-soluble, safe, adhesive
- Fast, easy installation
- Dries clear, quickly
- Adheres to common surfaces
- Repositionable during installation

InvisiLight® ILU Kits

INCLUDES MODULE AND CORD



InvisiLight® ILU Kits



Compact Footprint/
Discreet Appearance



Paintable to Match
Your Aesthetic



Easy, Quick Installation



Tight Bend Radius
with Negligible Loss
Around Corners

FEATURES AND BENEFITS

- Fast, easy, discrete installation
- Accepted by building owners and residents
- Plug and play, factory terminated and tested
- Auto slack storage to reduce space and inventory
- EZ-Bend 2.5 mm bend radius fiber for no concerns with corners
- Paintable
- Easy connection to ONT
- Reliable deployment by Tier 1 service providers since 2012

InvisiLight® ILU Modules

Placed near the ONT in the Unit

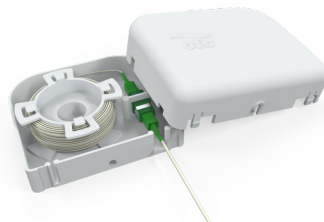
PRIMARILY USED WITH
DESK MOUNTED ONTs

PRIMARILY USED WITH
WALL MOUNTED ONTs



Compact Module

600 μ m Fiber
80x80 mm
(3.1 x 3.1 in.) Footprint



Standard Module

900 μ m Fiber
Includes Cover Screw for
Higher Security



EZ-Connect® Module

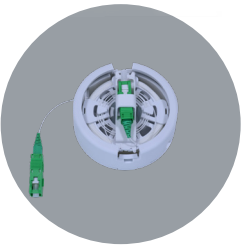
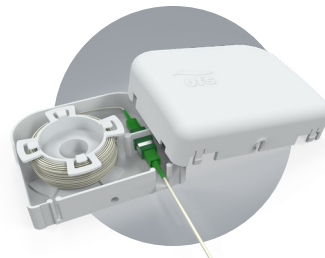
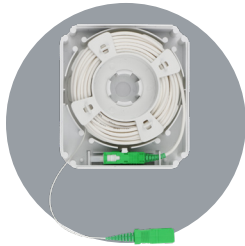
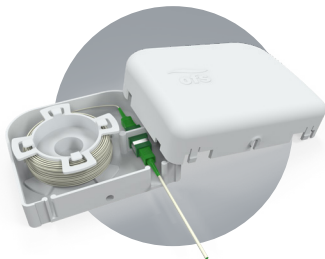
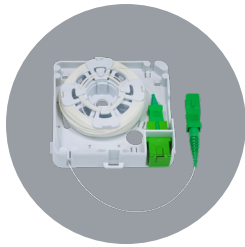
900 μ m Fiber
Includes Jumper to ONT



EZ-Hide® Module

600 μ m Fiber
Fits within Common 20
cu. in. Electrical Outlet
Boxes

PICK YOUR MODULE



InvisiLight ILU Kit Ordering Information

COMCODE	PRODUCT NUMBER	DESCRIPTION
---------	----------------	-------------

Compact Module, 600 µm Cord, SC-APC Connectors
(Does not Include Jumper to ONT)

301147609	NVSLGHTC-D-SASSAS-80X80-KIT-600UM-20M-EA	InvisiLight Compact Module Kit with 600 µm 20 meter fiber spool; pre connectorized both ends with SCA connectors
301147617	NVSLGHTC-D-SASSAS-80X80-KIT-600UM-30M-EA	InvisiLight Compact Module Kit with 600 µm 30 meter fiber spool; pre connectorized both ends with SCA connectors
301147625	NVSLGHTC-D-SASSAS-80X80-KIT-600UM-40M-EA	InvisiLight Compact Module Kit with 600 µm 40 meter fiber spool; pre connectorized both ends with SCA connectors

Standard Module, 900 µm Cord, SC-APC Connectors
(Does not Include Jumper to ONT)

301099115	NVSLGHTC-D-SCASCA-MODULE KIT-20M-EA	InvisiLight Standard Module Kit with 20 meter fiber spool; pre connectorized both ends with SC-APC connectors
301099123	NVSLGHTC-D-SCASCA-MODULE KIT-30M-EA	InvisiLight Standard Module Kit with 30 meter fiber spool; pre connectorized both ends with SC-APC connectors
301099131	NVSLGHTC-D-SCASCA-MODULE KIT-40M-EA	InvisiLight Standard Module Kit with 40 meter fiber spool; pre connectorized both ends with SC-APC connectors

EZ-Connect® Module
(Includes Jumper to ONT - SC Adapters)

301141834	NVSLGHTD-D-SCASCA-1-NAM-KIT 3MM-1.5M/40M	InvisiLight EZ-Connect Kit with 40 meter fiber spool and 1.5 meter 3 mm integrated jumper; pre connectorized both ends with SCA connectors
301141826	NVSLGHTD-D-SCASCA-1-NAM-KIT 2MM-2.5M/40M	InvisiLight EZ-Connect Kit with 40 meter fiber spool and 2.5 meter 2 mm integrated jumper; pre connectorized both ends with SCA connectors
301141818	NVSLGHTD-D-SCASCA-1-NAM-KIT 900-5.0M/40M	InvisiLight EZ-Connect Kit with 40 meter fiber spool and 5 meter 900 µm integrated jumper; pre connectorized both ends with SCA connectors

Standard Module with 2-Fiber InvisiLight - LC Connectors Only
(Does not Include Jumper to ONT)

301135752	NVSLGHTC-D-LA1LCA-02-MODULE KIT-20M	InvisiLight 2-Fiber Kit with a 20 meter fiber spool; pre connectorized both ends with LCA connectors
301135745	NVSLGHTC-D-LA1LCA-02-MODULE KIT-30M	InvisiLight 2-Fiber Kit with a 30 meter fiber spool; pre connectorized both ends with LCA connectors

InvisiLight® EZ-Hide® Behind-the-Wall Module
(Does not Include Jumper to ONT)

301160065	NVSLGHTC-D-SCASCA-EZH-SPOOL KIT-40M-1/EA	InvisiLight EZ-Hide Spool Behind the Wall Kit with 600 µm 40 meter fiber spool; pre connectorized with SCA connectors - includes SlimBox Wall Plate with SC-APC Adapter
301160057	NVSLGHTC-D-SCASCA-EZH-SPOOL-40M-1/EA	InvisiLight EZ-Hide Spool Behind the Wall spool only with 600 µm 40 meter fiber spool; pre connectorized with SCA connectors

NOTE: Module equipped with adapter, wall plugs and caps, one through-wall tool and instructions included with all kits.

* Other connector types available upon request. Contact your sales representative for more details.

Installation Tools



Adhesive Application Tool



30 mL Adhesive Tubes

Adhesive Tool Ordering Information

DESCRIPTION	COMCODE	PRODUCT NUMBER
Adhesive Application Tool	301079109	NVSLGHTC-MINI DISPENSING TOOL
30 mL Adhesive Tubes	301083184	NVSLGHTC-TUBE, 30ML ADHESIVEWH/GRTIP EA

Accessories



Pull-Through Tool



Wall Caps and Plugs

For additional information please contact your sales representative.

You can also visit our website at **LIGHTERA.COM** or call 1-888-FIBER-HELP (1-888-342-3743) from inside the USA or +1-770-798-5555 from outside the USA.

InvisiLight, EZ-Bend, and SlimBox are registered trademarks of Lightera, LLC. Lightera reserves the right to make changes to the prices and product(s) described in this document at any time without notice.

This document is for informational purposes only and is not intended to modify or supplement any Lightera warranties or specifications relating to any of its products or services.

Copyright © 2026 Lightera, LLC
All rights reserved, printed in USA.

Lightera Marketing
Communications

Date: 02/26

Revision: V1

For a full list of our certifications, visit our website