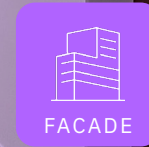


InvisiLight® MDU (Multi-Dwelling Unit) Solution

Invisible fiber. Visible results.



INVISILIGHT® MULTI-DWELLING UNIT: A LIGHTERA FTTX SOLUTION

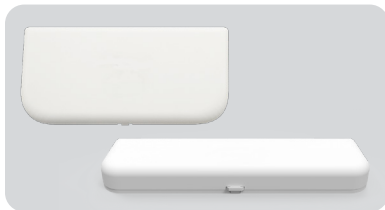
Applying our Award-Winning Optical Fiber to the Interior Hallways of Your Building

The **InvisiLight MDU Solution** is a fast and easy way to deploy fiber in buildings to pass living units or offices and is virtually invisible to the eye to increase acceptance by building owners and tenants. The InvisiLight MDU cord can be installed in risers and hallways to eliminate the need for floor enclosures.

The **InvisiLight ILU Solution** (sold separately), can be deployed to connect subscribers from the hallway to the ONT inside the living unit or office.

SIMPLIFY YOUR FIBER DEPLOYMENT

PRODUCTS USED



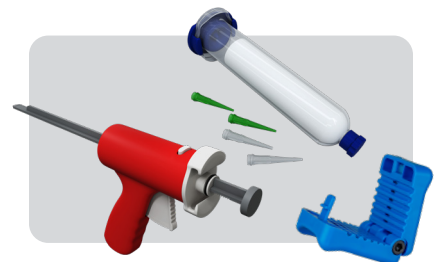
Point of Entry (POE) Modules
Placed Above Doorways in the Hall

- Transition to the living unit
- Two sizes available
- Supports splices, factory terminated, or field-installable connectors



InvisiLight MDU Cord
Up Risers and Down Hallways

- Features Lightera award-winning EZ Bend® Optical Fiber, better than ITU G.657B3, 2.5 mm bend radius
- 2.0 or 2.3 mm white cord, up to 16 fibers
- Color coded fibers
- Smoke/flame rated (Riser, FT-4)
- Pre-connectorized or bulk reel-in-box

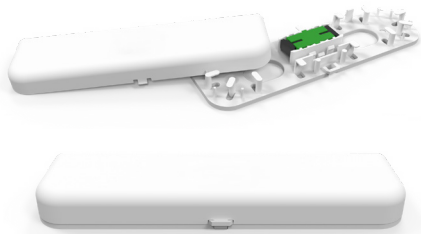


Installation System
Installation Tool and Adhesive

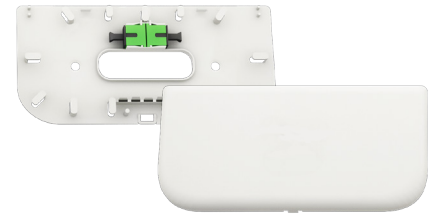
- Water-soluble, safe, adhesive
- Fast, easy installation
- Dries clear, quickly
- Adheres to common surfaces
- Repositionable during installation

Point of Entry (POE) Modules

Placed Above Doorways in the Hall



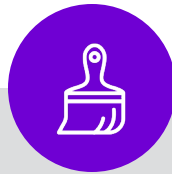
Compact POE Module



Standard POE Module



Compact Dimensions/
Discreet Appearance



Paintable to Match
Your Aesthetic



Easy, Quick Installation with
Two Screws and Internal
Fiber Guides

PRODUCT DESCRIPTION

The **Compact Point-of-Entry (POE) Module** and **Standard POE Module** serve as the transition point between the building hallway and the customer living unit. Following an installation survey, the installer mounts this module on the exterior wall of each living unit. A Fusion splice-on connector (SOC), fusion-spliced pigtail, or mechanical connector is used to connect the InvisiLight Multifiber Unit to the plug-and-play InvisiLight Indoor Living Unit (ILU) Solution.

FEATURES AND BENEFITS

- Serves as transition from InvisiLight MDU Cord to InvisiLight ILU Optical Fiber in the unit
- Accommodates one internal optical adapter (SC or LC footprint) and two fusion splices
- Slots on each side allow MDU Cord entry and exit from the top of the module
- InvisiLight ILU Optical Fiber transitions into the living unit through an access point in the base of the module
- Adapter can be mounted in three different positions to accommodate various sizes of connector boots
- Accommodates splice protectors (40 mm)

Ordering Information for POE Modules

DESCRIPTION	COMCODE	PART NUMBER
Compact POE Module (with adapter)	301124004	NVSLGHTHI-COMPACT-MODULE SCA ADAPTER
Standard POE Module (with adapter and pigtail)	301107454	NVSLGHTH-MODULE E/W SCA ADAPTER-PT

* Individual POE modules also include bend limiters, wall plugs, and through-wall tool. Items shown above have SC-APC connector adapters. Other adapter types available.

InvisiLight® MDU Cord (Spliced At the Telecom Closet)

Up Risers and Down Hallways, Available in 2000' (610m) Boxes or Factory-Terminated



Virtually Invisible,
Preferred by Building
Owners and Tenants



Uses Lightera Award
Winning EZ-Bend®
Optical Fiber

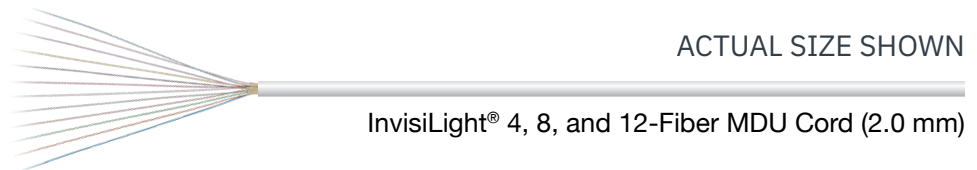


Faster and Easier to
Install



InvisiLight MDU Cord Ordering Information

FIBER COUNT	COMCODE	ITEM - 2000' BOX
4	PR1-001-815-0273	MPHW-004B-DRW-4-04-250-2.0MM-RIB-2000FT
8	PR1-001-817-0273	MPHW-008B-DRW-4-08-250-2.0MM-RIB-2000FT
12	PR1-001-819-0273	MPHW-012B-DRW-4-12-250-2.0MM-RIB-2000FT
16	PR1-001-861-0273	MPHW-016B-DRW-4-16-250-2.3MM-RIB-2000FT



Pre-Connectorized (One End Only) Kits (Connect At the Telecom Closet)

Cord and Modules Included as a Kit with Defined Lengths

KITS INCLUDE:

- SC, LC, or MTP connectors available
- POE modules to match the fiber count
- Wall plugs and through-wall tools (Optional bend limiters available separately)

Pre-Connectorized Kits Ordering Information

Item Number Coding Key: NVSLGHTHI-D-aaa-bbbb KIT-cc-dddM-12S/XXX

Example: NVSLGHTHI-D-SCA-CMOD KIT-12-155M-12S/XXX is a 12 fiber InvisiLight MDU kit with Compact POE Modules, SC-APC connectors on the inside cord end, 155 m cord length.

aaa = Connector Type	bbbb = POE Module Type	cc = InvisiLight MDU Cord Fiber Count	ddd = InvisiLight MDU Cord Length in Meters (Feet), <i>Additional Lengths Available</i>
SCA = SC-APC	CMOD = Compact POE Module	04	30 (98) 120 (393)
SCU = SC-UPC	MODU = Standard POE Module	06	45 (147) 150 (492)
LCA = LC-APC		08	50 (164) 155 (508)
LCU = LC-UPC		12	60 (196) 175 (574)
MTF = MTP/APC, no pins (female)		16	85 (278) 200 (656) 100 (328) 300 (984)

Installation Tools



Adhesive Application Tool



30 mL Adhesive Tubes



Jonard MS-6 Cord Splitter

Adhesive Tool Ordering Information

DESCRIPTION	COMCODE	PART NUMBER
Adhesive Application Tool	301079109	NVSLGHTC-MINI DISPENSING TOOL
30 mL Adhesive Tubes	301083184	NVSLGHTC-TUBE, 30ML ADHESIVEWH/GRTIP EA

Jonard Cord Splitter Ordering Information

DESCRIPTION	COMCODE	PART NUMBER
Jonard MS-6	301124988	TOOL, MS06-2.0MM-3.0MM BLUE

SlimBox® Splice Module

Can be used as transition module from indoor to outdoor or to splice cords with flame or smoke ratings (*primarily used in EMEA markets*).

SlimBox Splice Module Ordering Information

COMCODE	PART NUMBER
301145769	SLIMBOX-H, INDOOR, SPLICE, 01 FIBER MODULE

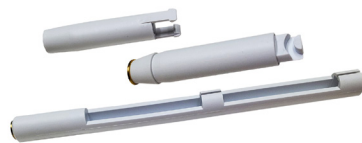
InvisiLight® POE Splice Module

This Hallway Repair Point-of-Entry Module allows Invisilight MDU cord to pass through and splice up to 12 fibers.

InvisiLight POE Splice Module Ordering Information

COMCODE	PART NUMBER
301107462	NVSLGHTHI-MODULE E/W SPLICE TRAY

Accessories



Pull-Through Tool



Wall Caps and Plugs

For additional information please contact your sales representative.

You can also visit our website at **LIGHTERA.COM** or call 1-888-FIBER-HELP (1-888-342-3743) from inside the USA or +1-770-798-5555 from outside the USA.

InvisiLight, EZ-Bend, and SlimBox are registered trademarks of Lightera, LLC. Lightera reserves the right to make changes to the prices and product(s) described in this document at any time without notice.

This document is for informational purposes only and is not intended to modify or supplement any Lightera warranties or specifications relating to any of its products or services.

Copyright © 2026 Lightera, LLC
All rights reserved, printed in USA.

Lightera Marketing
Communications

Date: 02/26
Revision: V1

For a full list of our certifications, visit our website