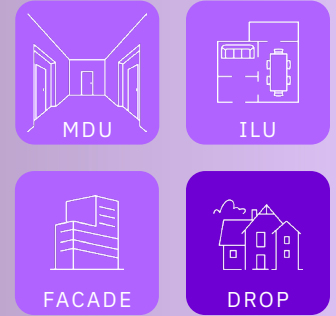




# InvisiLight® Drop Solution

Invisible fiber. Visible results.



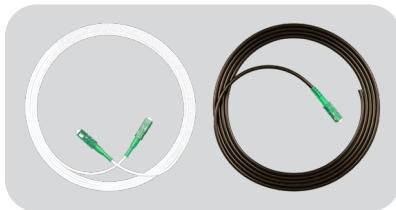
## INVISILIGHT® DROP: A LIGHTERA FTTX SOLUTION

Extending our Award-Winning Optical Fiber to and Into Homes, MDUs, and Offices

The **InvisiLight Drop Solution** offers a fast, easy, virtually invisible way to extend a Lightera EZ-Bend® drop cable inside by converting it to the InvisiLight solution, to increase customer acceptance and eliminate the need for transition boxes.

### SIMPLIFY YOUR FIBER DEPLOYMENT

#### PRODUCTS USED



#### **EZ-Bend® 3.0 or 4.8 mm Cordage and Jumpers**

- Contains same InvisiLight 900 µm fiber used in the InvisiLight ILU Solution, using Lightera's EZ Bend Optical Fiber, better than ITU G.657B3, 2.5 mm bend radius
- Indoor/Outdoor OFNR/FT-4 rated
- Reel-in-a-Box or SC-APC pre-terminated



#### **SlimBox® Wall Plate**

Applied inside Home or Business

- Compact, low visibility profile.
- Surface mount or on to common electrical boxes
- Up to two internal optical adapters (SC footprint)
- Flexible deployment: 2 access ports (top), 2 (bottom) and 3 (back)
- Hidden front screw for fast and secure cover attachment



#### **Installation System**

Installation Tool and Adhesive

- Water-soluble, safe, adhesive
- Fast, easy installation
- Dries clear, quickly
- Adheres to common surfaces
- Repositionable during installation

## EZ-Bend® 3.0 or 4.8 mm Cordage and Jumpers



Compact Footprint/  
Discreet Appearance



Easy, Quick Installation



Tight Bend Radius  
with Negligible Loss  
Around Corners



### EZ-Bend Jumper Ordering Information

| Product Code      | Description  |
|-------------------|--|
| JR5DW001SCASCAnnF | 4.8 mm Riser White Single Fiber SCA to SCA                     |
| JRVDW001SCASCAnnF | 3.0 mm White Ruggedized Indoor/Outdoor Single Fiber SCA to SCA |

**NOTE:** *nnn* = Substituted for length of jumper

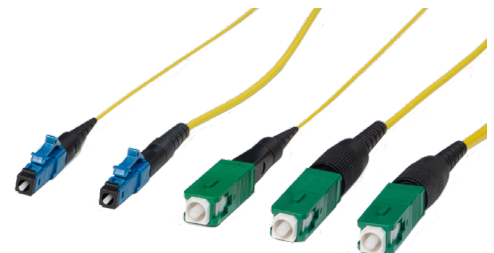


### Premises Cable Reel-in-a-Box Solution Ordering Information

| Cable Design  | Part Number      | Ordering Part Number            | Fiber                 | Jacket Color | Box Weight             |
|---|------------------|---------------------------------|-----------------------|--------------|------------------------|
| <b>3.0 mm EZ-Bend Cable - Indoor/Outdoor Ruggedized</b> |                  |                                 |                       |              |                        |
| Dielectric  | PR1-001-346-0273 | IR30-001M-DRK-4-WPVC-RIB-1500FT | EZ-Bend<br>(G.657.B3) | Black        | 5.7 kg<br>(13 lbs.)    |
|   | PR1-001-347-0273 | IR30-001M-DRW-4-WPVC-RIB-1500FT |                       | White        |                        |
|   | PR1-001-229-0273 | IR30-001M-DRK-4-WPVC-RIB-4500FT |                       | Black        | 12.3 kg<br>(28 lbs.)   |
|   | PR1-001-578-0273 | IR30-001M-DRW-4-WPVC-RIB-4500FT |                       | White        |                        |
| <b>4.8 mm EZ-Bend Cable - Indoor/Outdoor Ruggedized</b> |                  |                                 |                       |              |                        |
| Dielectric  | PR1-001-348-0273 | IO48-001M-DRK-4-WPVC-RIB-1500FT | EZ-Bend<br>(G.657.B3) | Black        | 11.1 kg<br>(24.5 lbs.) |
|   | PR1-001-349-0273 | IO48-001M-DRW-4-WPVC-RIB-1500FT |                       | White        |                        |
| Toneable  | PR1-001-225-0273 | IT48-001A-DRO-4-WPVC-RIB-1300FT |                       | Orange       | 11.3 kg<br>(24.9 lbs.) |
|   | PR1-001-227-0273 | IT48-001A-DRK-4-WPVC-RIB-1300FT |                       | Black        |                        |

### Use our Field Installable **EZ!Fuse Splice On Connectors**

- Simple, Fast & Consistent Field Terminations
- No Polishing or Epoxy
- Simplifies Fiber Management



## SlimBox® Wall Plate



Compact Footprint/  
Discreet Appearance



Paintable to Match Your  
Aesthetic



Easy, Quick Installation  
with Two Screws and  
Internal Fiber Guides



### FEATURES AND BENEFITS

- Allows termination of an optical cable or jumper using direct connectorization or splicing (fusion or mechanical) to optical extensions (pigtails) of two optical fibers
- Accommodates up to two internal optical adapters (SC footprint)
- Flexible deployment with 02 access ports on the top, 02 on the bottom and 03 through the back of the module Compatible with wall electrical boxes
- Compact dimensions
- Discreet appearance
- Hidden frontal screw for fast and secure cover attachment to the base
- Internal fiber guides for easy installation
- Can be installed in any vertical plane surface
- Plastic body for high mechanical resistance and efficient design
- Accommodates splice protectors (40 mm)

### PRODUCT DESCRIPTION

The SlimBox Wall Plate serves as a termination point or a demarcation point for optical fiber in an indoor environment. An EZ-Bend® jumper would connect the SlimBox Wall Plate to an desktop ONT and the InvisiLight® ILU solution may be used in case of a distant ONT.

#### SlimBox Wall Plate Ordering Information

| Comcode   | Product Number                         | Description                           |
|-----------|--|---------------------------------------|
| 301122826 | SLIMBOX-V, INDOOR WALL PLATE-SC        | SlimBox Wall Plate without adapter    |
| 301122834 | SLIMBOX-V, INDOOR WALL PLATE-1F-SM-SCA | SlimBox Wall Plate, 1 SC-APC adapter  |
| 301122842 | SLIMBOX-V, INDOOR WALL PLATE-2F-SM-SCA | SlimBox Wall Plate, 2 SC-APC adapters |

**NOTE:** The front screw cover can be customizable with a customer's logo for larger volume purchases (Contact Lightera for more information.)

## Installation Tools



**Adhesive Application Tool**



**30 mL Adhesive Tubes**

### Adhesive Tool Ordering Information

| DESCRIPTION               | COMCODE   | PRODUCT NUMBER                          |
|---------------------------|-----------|---|
| Adhesive Application Tool | 301079109 | NVSLGHTC-MINI DISPENSING TOOL           |
| 30 mL Adhesive Tubes      | 301083184 | NVSLGHTC-TUBE, 30ML ADHESIVEWH/GRTIP EA |

## Accessories



**Pull-Through Tool**



**Wall Caps and Plugs**

**For additional information please contact your sales representative.**

You can also visit our website at **LIGHTERA.COM** or call 1-888-FIBER-HELP (1-888-342-3743) from inside the USA or +1-770-798-5555 from outside the USA.

InvisiLight, EZ-Bend, and SlimBox are registered trademarks of Lightera, LLC. Lightera reserves the right to make changes to the prices and product(s) described in this document at any time without notice.

This document is for informational purposes only and is not intended to modify or supplement any Lightera warranties or specifications relating to any of its products or services.

Copyright © 2026 Lightera, LLC  
All rights reserved, printed in USA.

Lightera Marketing  
Communications

Date: 04/26

Revision: V1

For a full list of our certifications, visit our website